

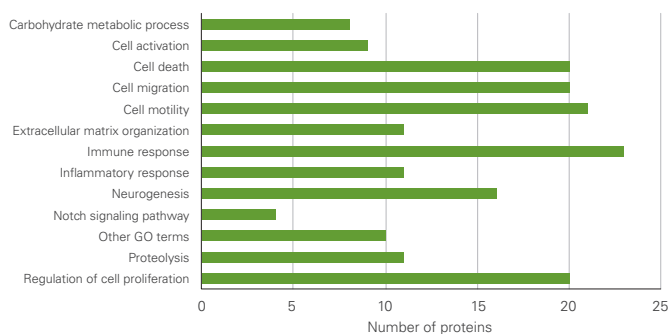
Proseek Multiplex Development

ADP-ribosyl cyclase/cyclic ADP-ribose hydrolase 2 (BST1)	Q10588	Desmocollin-2 (DSC2)	Q02487
ADP-sugar pyrophosphatase (NUDT5)	Q9UKK9	Dickkopf-related protein 3 (DKK3)	Q9UBP4
Aggrecan core protein (ACAN)	P16112	Dystroglycan (DAG1)	Q14118
Amyloid beta A4 protein (APP)	P05067	Early activation antigen CD69 (CD69)	Q07108
Angiotensin-related protein 4 (ANGPTL4)	Q9BY76	Endothelial cell-selective adhesion molecule (ESAM)	Q96AP7
Arylsulfatase A (ARSA)	P15289	Fc receptor-like protein 5 (FCRL5)	Q96RD9
Basal cell adhesion molecule (BCAM)	P50895	Flavin reductase NADPH (BLVRB)	P30043
Beta-1,4-galactosyltransferase 1 (B4GALT1)	P15291	Follistatin-related protein 3 (FSTL3)	Q95633
Beta-1,4-glucuronyltransferase 1 (B4GAT1)	O43505	Galactoside 3(4)-L-fucosyltransferase, Alpha-(1,3)-fucosyltransferase 3/5 (FUT3/5)	P21217, Q11128
Beta-glucuronidase (GUSB)	P08236	Glycoprotein hormones alpha chain (CGA)	P01215
Beta-microseminoprotein (MSMB)	P08118	Glycoprotein Xg (XG)	P55808
Carbonic anhydrase 2 (CA2)	P00918	Hepatitis A virus cellular receptor 2 (HAVCR2)	Q8TD00
Carbonic anhydrase 6 (CA6)	P23280	HLA class II histocompatibility antigen gamma chain (CD74)	P04233
Cathepsin F (CTSF)	Q9UBX1	Inactive serine protease PAMR1 (PAMR1)	Q6UXH9
Cation-independent mannose-6-phosphate receptor (IGF2R)	P11717	Inhibin beta C chain (INHBC)	P55103
C-C motif chemokine 21 (CCL21)	O00585	Integrin alpha-5 (ITGA5)	P08648
CD97 antigen (CD97)	P48960	Integrin beta-1 (ITGB1)	P05556
CD99 antigen-like protein 2 (CD99L2)	Q8TC22	Interleukin-13 receptor subunit alpha-1 (IL13RA1)	P78552
CD109 antigen (CD109)	Q6YHK3	Kunitz-type protease inhibitor 1 (SPINT1)	Q43278
CD177 antigen (CD177)	Q8N6Q3	Kunitz-type protease inhibitor 2 (SPINT2)	Q43291
CD209 antigen (CD209)	Q9NNX6	Lactadherin (MFG8)	Q08431
Cell adhesion molecule-related/down-regulated by oncogenes (CDON)	Q4KMG0	Laminin subunit alpha-4 (LAMA4)	Q16363
CMRF35-like molecule 9 (CD300LG)	Q6UXG3	LDL chaperone MESD (MESDC2)	Q14696
Cochlin (COCH)	Q43405	Legumain (LGMN)	Q99538
Collectin-12 (COLEC12)	Q5KU26	Leukocyte-associated immunoglobulin-like receptor 1 (LAIR1)	Q6GTX8
Contactin-4 (CNTN4)	Q8IWW2	Low affinity immunoglobulin epsilon Fc receptor (FCER2)	P06734
Corticotropin-releasing factor-binding protein (CRHBP)	P24387	Lymphocyte function-associated antigen 3 (CD58)	P19256
C-type lectin domain family 11 member A (CLEC11A)	Q9Y240	Macrophage migration inhibitory factor (MIF)	P14174
C-type lectin domain family 14 member A (CLEC14A)	Q86T13	Matrilin-2 (MATN2)	O00339
Cystatin-M (CST6)	Q15828	Mycosin (MYOC)	Q99972
Cysteine-rich motor neuron 1 protein (CRIM1)	Q9NZV1	Neurofascin (NFASC)	Q94856
Cysteine-rich with EGF-like domain protein 2 (CRELD2)	Q6UXH1	Nidogen-2 (NID2)	Q14112
Cytosolic phospholipase A2 (PLA2G4A)	P47712	Osteomodulin (OMD)	Q99983

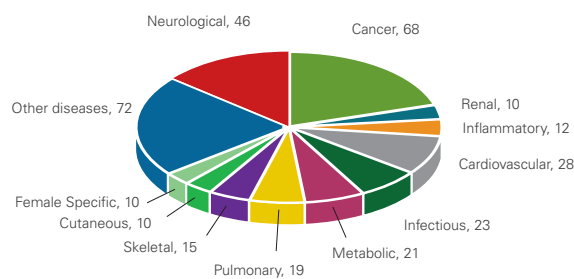
Table continues on reverse ►

Paired immunoglobulin-like type 2 receptor alpha (PILRA)	Q9UKJ1	Serine protease HTRA2, mitochondrial (HTRA2)	O43464
Peptidyl-prolyl cis-trans isomerase B (PPIB)	P23284	Serine protease inhibitor Kazal-type 1 (SPINK1)	P00995
Phosphatidylethanolamine-binding protein 1 (PEBP1)	P30086	Serine protease inhibitor Kazal-type 5 (SPINK5)	O9NQ38
Platelet endothelial aggregation receptor 1 (PEAR1)	Q5VY43	Signal-regulatory protein beta-1 (SIRPB1)	O00241
Platelet-derived growth factor receptor beta (PDGFRB)	P09619	Stress-induced-phosphoprotein 1 (STIP1)	P31948
Protein deglycase DJ-1 (PARK7)	Q99497	Synaptosomal-associated protein 29 (SNAP29)	O95721
Protein disulfide-isomerase (P4HB)	P07237	Thymosin beta-10 (TMSB10)	P63313
Protein NOV homolog (NOV)	P48745	Tissue alpha-L-fucosidase (FUCA1)	P04066
Receptor-type tyrosine-protein phosphatase F (PTPRF)	P10586	Tripeptidyl-peptidase 1 (TPP1)	O14773
Roundabout homolog 1 (ROBO1)	Q9Y6N7	Tumor necrosis factor receptor superfamily member 19L (RELTL)	O96924
Scavenger receptor class F member 1 (SCARF1)	Q14162	Tyrosine-protein phosphatase non-receptor type 6 (PTPN6)	P29350
Secretoglobulin family 3A member 1 (SCGB3A1)	Q96QR1	WAP, Kazal, immunoglobulin, Kunitz and NTR domain-containing protein 2 (WFIKKN2)	Q8TEU8
Semaphorin-7A (SEMA7A)	O75326	V-set and immunoglobulin domain-containing protein 4 (VSIG4)	O9Y279

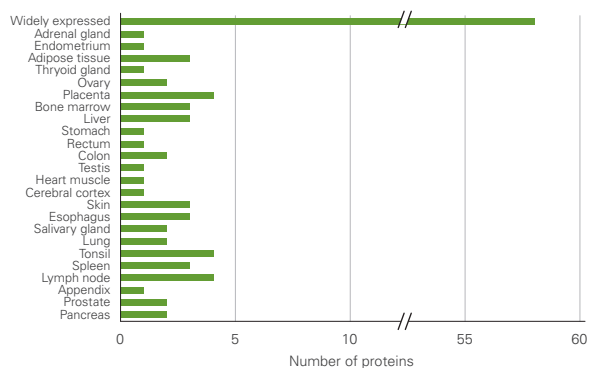
Biological Process



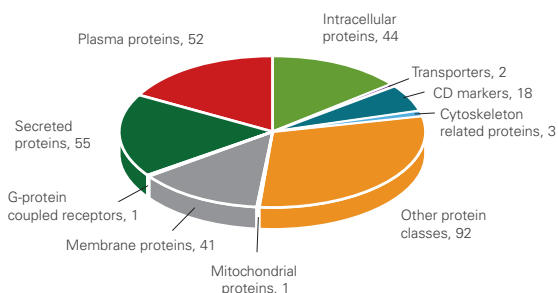
Disease Area



Tissue Expression



Protein Class



Classification of biomarker proteins included in the panel based on Biological Process, Disease Area, Tissue Expression and Protein Class. Note that proteins may belong to multiple classes in some cases. For more details visit www.olink.com/development

This product is sold under license from PHRI Properties, Inc. and may be used under the PHRI Properties patent rights outside the field of human in vitro diagnostics.

Proseek® is a trademark of Olink AB. All third party trademarks are the property of their respective owners. © Copyright 2017 Olink Proteomics AB.