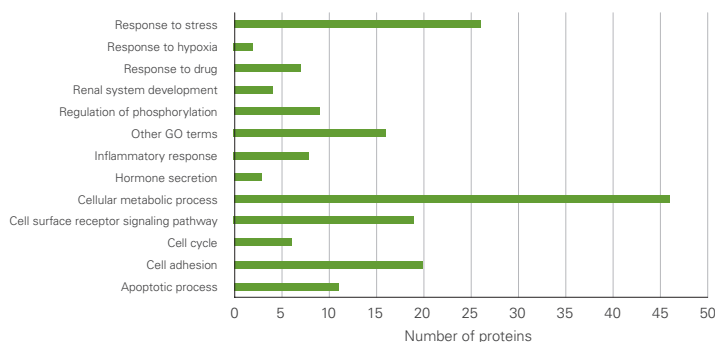
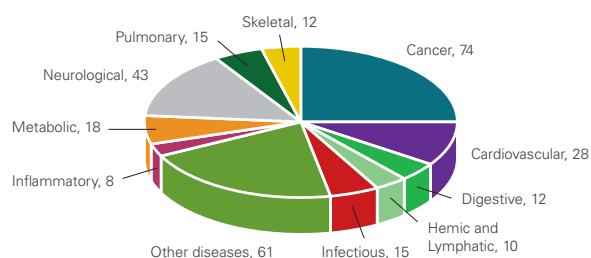


Reticulon-4 receptor (RTN4R)	Q9BZR6	Synaptosomal-associated protein 23 (SNAP23)	O00161
Retinal dehydrogenase 1 (ALDH1A1)	P00352	Syndecan-4 (SDC4)	P31431
Ribosyldihyronicotinamide dehydrogenase [quinone] (NQO2)	P16083	T-cell surface glycoprotein CD1c (CD1C)	P29017
Scavenger receptor cysteine-rich domain-containing group B protein (SSC4D)	Q8WTU2	Thimet oligopeptidase (THOP1)	P52888
Sclerostin (SOST)	Q9BQB4	Thioredoxin domain-containing protein 5 (TXNDC5)	Q8NBS9
Semaphorin-3F (SEMA3F)	Q13275	Thymidine phosphorylase (TYMP)	P19971
Serpin B6 (SERPINB6)	P35237	Thyrotropin subunit beta (TSHB)	P01222
Serpin B8 (SERPINB8)	P50452	Trefoil factor 2 (TFF2)	Q03403
Sialic acid-binding Ig-like lectin 7 (SIGLEC7)	Q9Y286	Tubulointerstitial nephritis antigen-like (TINAGL1)	Q9GZM7
Sialomucin core protein 24 (CD164)	Q04900	Tyrosine-protein kinase receptor TYRO3 (TYRO3)	Q06418
Soluble calcium-activated nucleotidase 1 (CANT1)	Q8WVQ1	Ubiquitin carboxyl-terminal hydrolase 8 (USP8)	P40818
Sulfatase-modifying factor 2 (SUMF2)	Q8NBJ7	Versican core protein (VCAN)	P13611

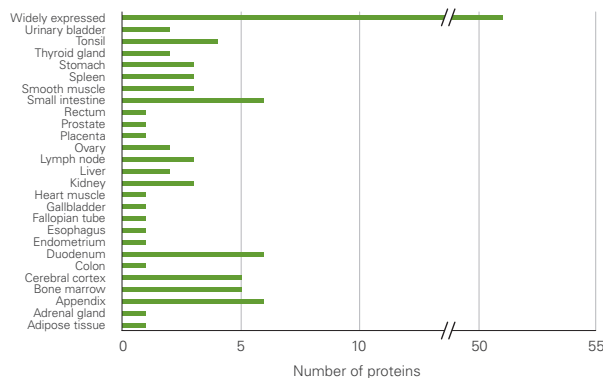
Biological Process



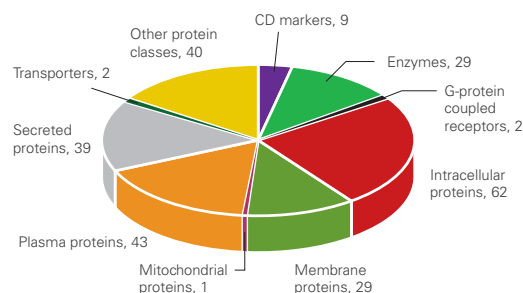
Disease Area



Tissue Expression



Protein Class



Classification of biomarker proteins included in the panel based on Biological Process, Disease Area, Tissue Expression and Protein Class. Note that proteins may belong to multiple classes in some cases. For more details visit www.olink.com/metabolism

This product is sold under license from PHRI Properties, Inc. and may be used under the PHRI Properties patent rights outside the field of human in vitro diagnostics.

Proseek® is a trademark of Olink AB. All third party trademarks are the property of their respective owners. © Copyright 2016 Olink Proteomics AB.