

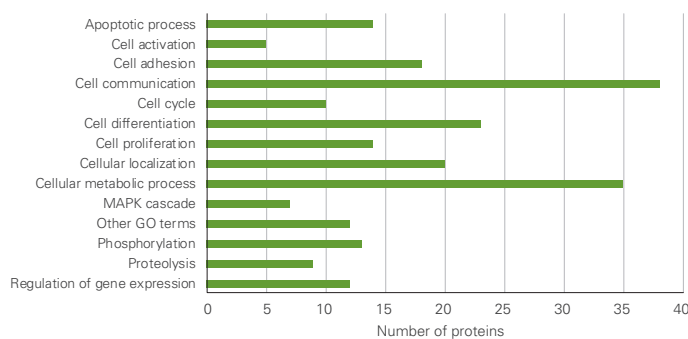
Proseek Multiplex Cell Regulation

Amphoterin-induced protein 2 (AMIGO2)	Q86SJ2	GDNF family receptor alpha-2 (GFRA2)	O00451
Amyloid beta A4 precursor protein-binding family B member 1-interacting protein (APBB1IP)	Q7Z5R6	Glucagon (GCG)	P01275
Anterior gradient protein 3 (AGR3)	Q8TD06	Growth hormone variant (GH2)	P01242
Arylsulfatase B (ARSB)	P15848	Heparan sulfate glucosamine 3-O-sulfotransferase 3B1 (HS3ST3B1)	Q9Y662
ATP-dependent 6-phosphofructokinase, muscle type (PFKM)	P08237	Heparan-sulfate 6-O-sulfotransferase 1 (HS6ST1)	O60243
Bcl-2-like protein 11 isoform BimL (BCL2L11)	O43521	Immunoglobulin superfamily member 3 (IGSF3)	O75054
Beta-1,3-galactosyl-O-glycosyl-glycoprotein beta-1,6-N-acetylglucosaminyltransferase (GCNT1)	Q02742	Interleukin-17 receptor B (IL17RB)	Q9NRM6
Biglycan (BGN)	P21810	Kallikrein-12 (KLK12)	Q9UKR0
Bile salt sulfotransferase (SULT2A1)	Q06520	Kazal-type serine protease inhibitor domain-containing protein 1 (KAZALD1)	Q96I82
Breakpoint cluster region protein (BCR)	P11274	Leucine-rich repeat neuronal protein 1 (LRRN1)	Q6UXK5
Brother of CDO (BOC)	Q9BWW1	Ly6/PLAUR domain-containing protein 1 (LYPD1)	Q8N2G4
Calcium/calmodulin-dependent protein kinase kinase 1 (CAMKK1)	Q8N5S9	Lymphoid-restricted membrane protein (LRMP)	Q12912
Calsyntenin-3 (CLSTN3)	Q9BQT9	Methionine aminopeptidase 1D, mitochondrial (METAP1D)	Q6UB28
Cell growth-regulating nucleolar protein (LYAR)	Q9NX58	Myelin-oligodendrocyte glycoprotein (MOG)	Q16653
Cellular tumor antigen p53 (TP53)	P04637	N(G),N(G)-dimethylarginine dimethylaminohydrolase 1 (DDAH1)	Q94760
Cerebral dopamine neurotrophic factor (CDNF)	Q49AH0	NF-kappa-B inhibitor epsilon (NFKBIE)	O00221
Collagen alpha-1(IV) chain (COL4A1)	P02462	Nicalin (NCLN)	Q969V3
Cone-rod homeobox protein (CRX)	O43186	Ninjurin-1 (NINJ1)	Q92982
Cryptic protein (CFC1)	P0CG37	Nuclear factor of activated T-cells, cytoplasmic 1 (NFATC1)	Q95644
C-type mannose receptor 2 (MRC2)	Q9UBG0	Oligodendrocyte-myelin glycoprotein (OMG)	P23515
Cysteine protease ATG4A (ATG4A)	Q8WYN0	Opticin (OPTC)	Q9UBM4
Cysteine-rich secretory protein 2 (CRISP2)	P16562	Peroxisiredoxin-6 (PRDX6)	P30041
Dickkopf-like protein 1 (DKKL1)	Q9UK85	Podocalyxin-like protein 2 (PODXL2)	Q9NZ53
Discoidin, CUB and LCCL domain-containing protein 2 (DCBLD2)	Q96PD2	Polypeptide N-acetylgalactosaminyltransferase 2 (GALNT2)	Q10471
DnaJ homolog subfamily B member 1 (DNAJB1)	P25685	Probable carboxypeptidase X1 (CPXM1)	Q96SM3
Dual specificity mitogen-activated protein kinase kinase 6 (MAP2K6)	P52564	Prokineticin-1 (PROK1)	P58294
Dynactin subunit 2 (DCTN2)	Q13561	Prolactin regulatory element-binding protein (PREB)	Q9HCU5
E3 ubiquitin-protein ligase CBL (CBL)	P22681	Protein FAM19A5 (FAM19A5)	Q7Z5A7
Ectonucleoside triphosphate diphosphohydrolase 6 (ENTPD6)	O75354	Protein Wnt-9a (WNT9A)	O14904
Fibroblast growth factor 21 (FGF21)	Q9NSA1	Protocadherin-17 (PCDH17)	O14917
Friend leukemia integration 1 transcription factor (FLI1)	Q01543	Ras GTPase-activating-like protein IQGAP2 (IQGAP2)	Q13576
Galectin-7 (LGALS7)	P47929	Regulator of G-protein signaling 8 (RGS8)	P57771
Gamma-secretase-activating protein (GSAP)	A4D1B5	Rho GTPase-activating protein 1 (ARHGAP1)	Q07960
Gastrophilin (GKN1)	Q9NS71	Rho guanine nucleotide exchange factor 12 (ARHGEF12)	Q9NZN5

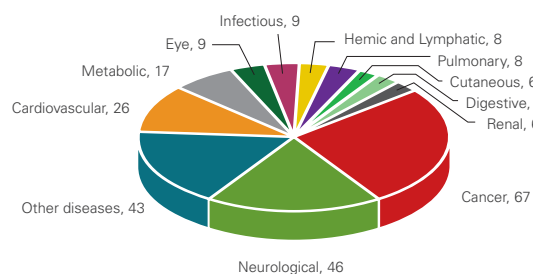
Table continues on reverse ►

Seizure 6-like protein 2 (SEZ6L2)	Q6UXD5	Transcription factor AP-1 (JUN)	P05412
Semaphorin-4C (SEMA4C)	Q9C0C4	Transforming acidic coiled-coil-containing protein 3 (TACC3)	Q9Y6A5
Serine/threonine-protein kinase PAK 4 (PAK4)	Q96013	Tudor and KH domain-containing protein (TDRKH)	Q9Y2W6
Sialic acid-binding Ig-like lectin 10 (SIGLEC10)	Q96LC7	Tumor necrosis factor receptor superfamily member 10A (TNFRSF10A)	O00220
Sialic acid-binding Ig-like lectin 6 (SIGLEC6)	O43699	Tumor-associated calcium signal transducer 2 (TACSTD2)	P09758
SLAM family member 8 (SLAMF8)	Q9P0V8	Vascular endothelial growth factor D (VEGFD)	O43915
SLIT and NTRK-like protein 2 (SLITRK2)	Q9H156	Vesicle-associated membrane protein 5 (VAMP5)	Q95183
SLIT and NTRK-like protein 6 (SLITRK6)	Q9H5Y7	Wiskott-Aldrich syndrome protein family member 1 (WASF1)	Q92558
Src kinase-associated phosphoprotein 1 (SKAP1)	Q86WV1	Wiskott-Aldrich syndrome protein family member 3 (WASF3)	Q9UPY6
Syntaxin-6 (STX6)	O43752	VPS10 domain-containing receptor SorCS2 (SORCS2)	Q96PQ0
Syntaxin-16 (STX16)	O14662	Zinc finger and BTB domain-containing protein 16 (ZBTB16)	Q05516
T-cell leukemia/lymphoma protein 1B (TCL1B)	Q95988	Zinc finger and BTB domain-containing protein 17 (ZBTB17)	Q13105

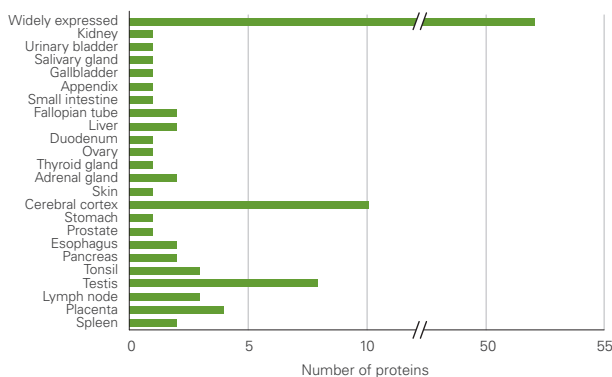
Biological Process



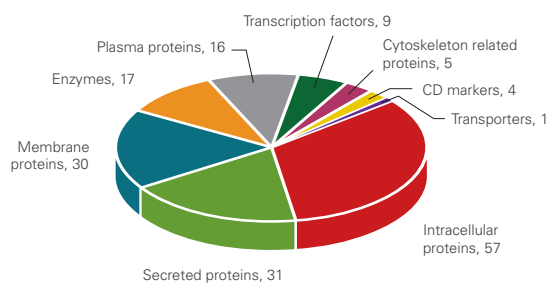
Disease Area



Tissue Expression



Protein Class



Classification of biomarker proteins included in the panel based on Biological Process, Disease Area, Tissue Expression and Protein Class. Note that proteins may belong to multiple classes in some cases. For more details visit www.olink.com/cell-regulation

This product is sold under license from PHRI Properties, Inc. and may be used under the PHRI Properties patent rights outside the field of human in vitro diagnostics.

Proseek® is a trademark of Olink AB. All third party trademarks are the property of their respective owners. © Copyright 2017 Olink Proteomics AB.