

SciLifeLab PULSE

SciLifeLab PULSE Webinar for Applicants

Time: December 18, 09:00-10:00 and 16:00-17:00 UTC+1, 2025, zoom



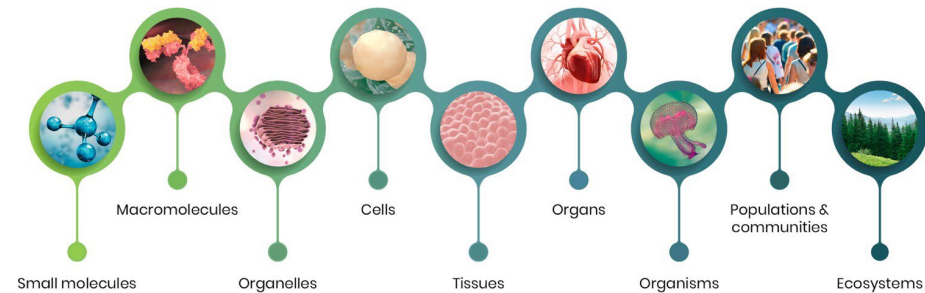
What is SciLifeLab?

Government appointed mission as a **national research infrastructure within life sciences**, founded in 2010 by Karolinska Institutet, KTH Royal Institute of Technology, Stockholm University and Uppsala University

Activities at **all major Swedish universities**

... and collaborations with healthcare, industry, other governmental agencies and international organizations

Read more about SciLifeLab here <https://www.scilifelab.se/>



SciLifeLab areas of activities



Provide excellent and impactful life science **infrastructure**

10 service areas and 40 units
1,800 users and 4,000 projects yearly
600 technology experts



Strengthen **research communities, capabilities, and global partnerships**

>400 group leaders across all sites
Strategic areas: Translation to Healthcare, Pandemic Laboratory Preparedness, Planetary Biology
Drug Discovery & Development
International collaborations e.g. EMBL



Facilitate the transformation of life science **data into knowledge**

SciLifeLab & Wallenberg National Program for Data-Driven Life Science (DDLs)
Computational and data science base for open, real-time FAIR data sharing
AI and data science expertise in life science



Attract scientific excellence and provide advanced **training**

SciLifeLab and DDLs Fellows program
Training hub
PhD and postdoc training



Innovation and bridge-building for the benefit of society

Collaborations across sectors and borders, with industry and healthcare

SciLifeLab PULSE postdoctoral program



Funded by Marie Skłodowska-Curie Actions COFUND



48 postdocs recruited in two calls: Jan 2025 and Dec 2025
(first cohort started Oct 2025)



Second call for 27 postdocs: Dec 15 - March 16, 2026



3-year fellowships hosted by SciLifeLab Group Leaders
across 11 universities, with secondments at 29 partners



Focus on innovative, fundamental, and translational research in diverse environments



Offers academic (32 positions) and entrepreneurial (16 positions) tracks



Provides skills for long-term career sustainability through specialised training and mentor support

*For application details
or hosting inquiries, visit
scilifelab.se/research/pulse*



PULSE partners



- KTH beneficiary/SciLifeLab responsible for program coordination
- 11 implementing partners acting as main postdoc hosts, SciLifeLab Drug Discovery & Development platform (DDD) responsible for entrepreneurial track

Implementing partners



Associated partners



PULSE partners



- KTH beneficiary/SciLifeLab responsible for program coordination
- 11 implementing partners acting as main postdoc hosts, SciLifeLab Drug Discovery & Development platform (DDD) responsible for entrepreneurial track
- 29 associated partners (providing additional training and secondments)

Implementing partners



Associated partners



PULSE partners



- KTH beneficiary/SciLifeLab responsible for program coordination
- 11 implementing partners acting as main postdoc hosts, SciLifeLab Drug Discovery & Development platform (DDD) responsible for entrepreneurial track
- 29 associated partners (providing additional training and secondments)

Implementing partners



Associated partners



Industry partners

PULSE partners



- KTH beneficiary/SciLifeLab responsible for program coordination
- 11 implementing partners acting as main postdoc hosts, SciLifeLab Drug Discovery & Development platform (DDD) responsible for entrepreneurial track
- 29 associated partners (providing additional training and secondments)

Implementing partners



Associated partners



International partners

PULSE partners



- KTH beneficiary/SciLifeLab responsible for program coordination
- 11 implementing partners acting as main postdoc hosts, SciLifeLab Drug Discovery & Development platform (DDD) responsible for entrepreneurial track
- 29 associated partners (providing additional training and secondments)

Implementing partners

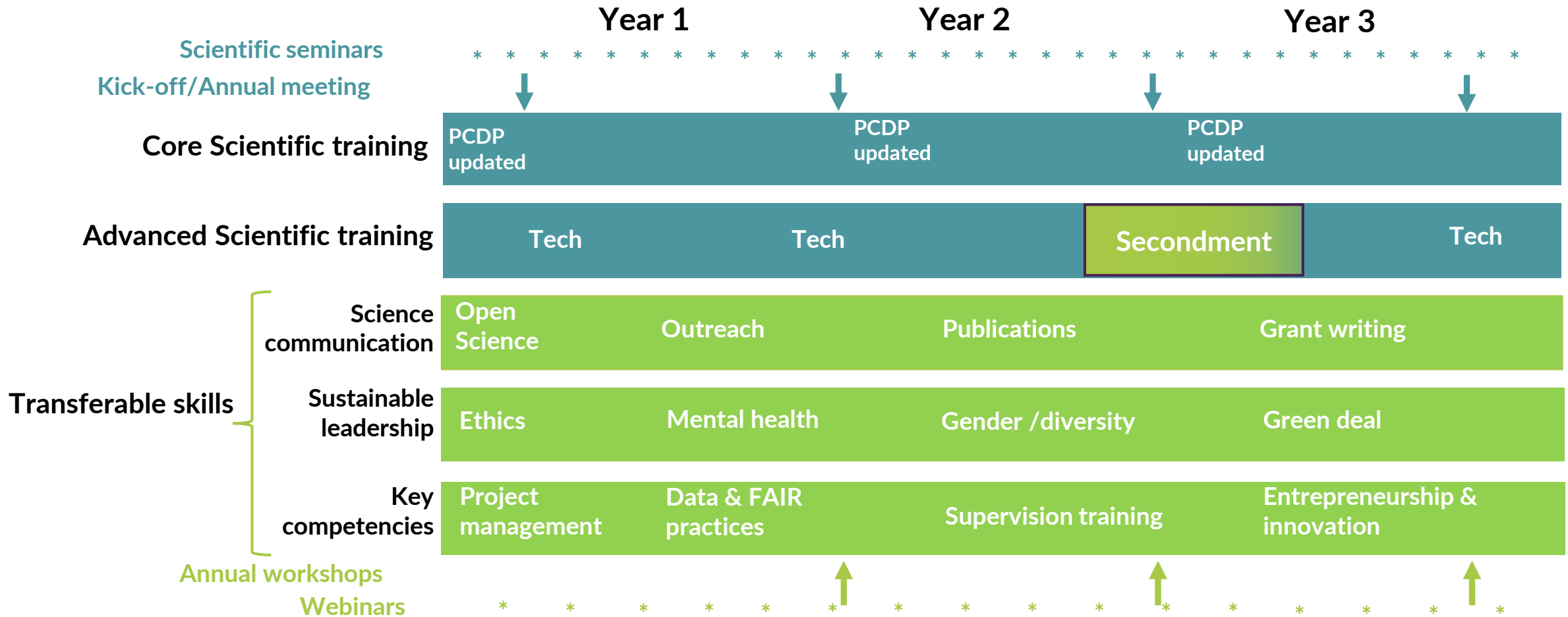


Associated partners



Research infrastructures, institutes and networks

Training – the core of SciLifeLab PULSE



According to Personal Career Development Plan (PCDP)
Annual scientific meeting/workshops, webinars and secondments are mandatory

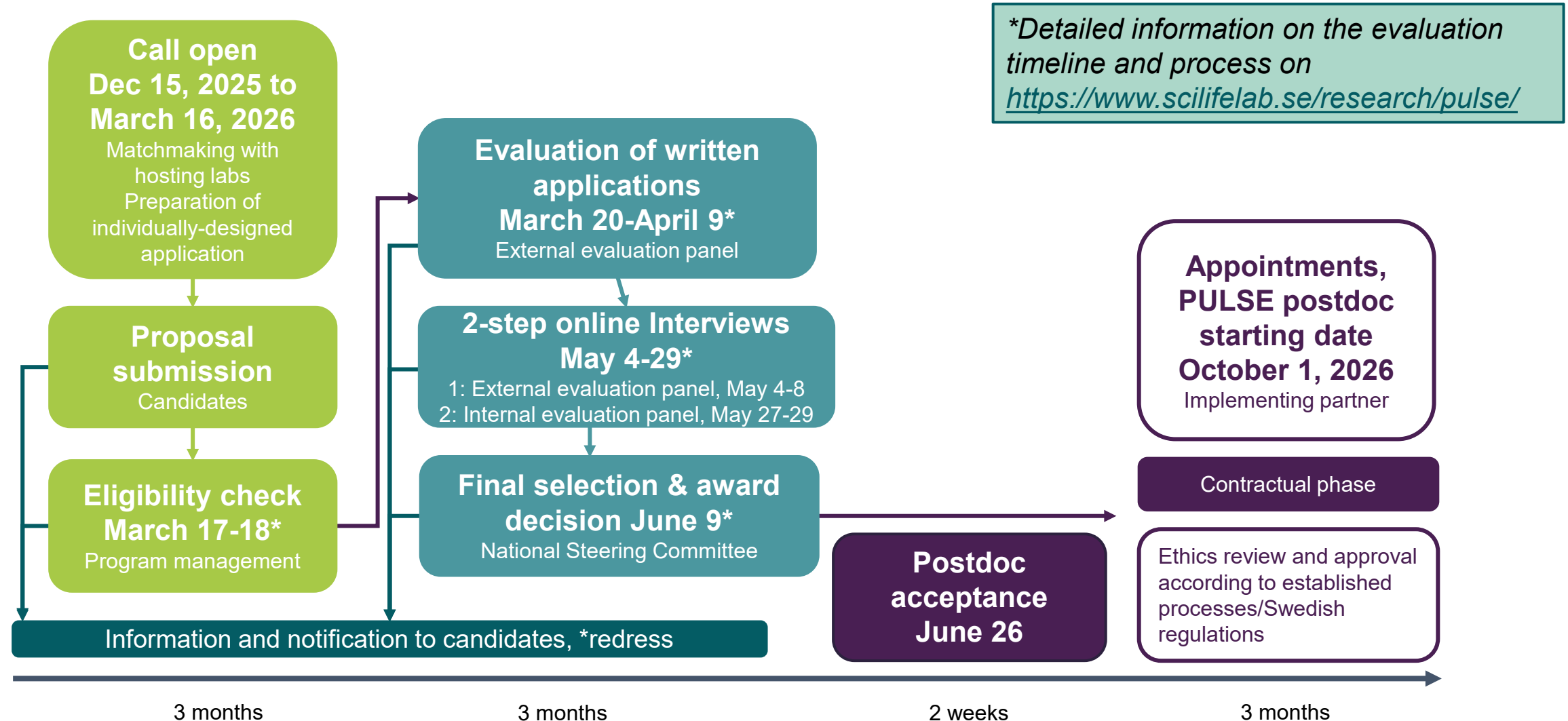
PULSE postdoc conditions



- 3-year employment contract including social security and benefits
- Assistance in matters related to relocation to Sweden
- Minimum monthly gross starting salary of >38,000 SEK, net 27,000 SEK (est. 3500 resp. 2500 EUR/month)
- Ambitious training and career support offer



PULSE call timeline 2025-2026





How to apply



PULSE eligibility requirements

- ✓ **Academic:** PhD awarded/defended within 3 years prior to the call deadline
- ✓ **Mobility:** Applicants cannot have lived, studied or worked in Sweden for more than 12 months in the past three years
- ✓ Applicants cannot have been employed in the PULSE hosting lab
- ✓ Applications must be submitted via PULSE application platform,
https://anubis.scilifelab.se/call/PULSE_call_2_2026
- ✓ ***Hosting PI cannot be involved in writing the proposal, but project discussion is encouraged with all collaborators proposed***

PULSE Guide for Applicants



SciLifeLab PULSE

Program for future leaders in life science

Guide for Applicants

- Please read guide carefully
- Downloadable from SciLifeLab PULSE application page

Table of Contents

Program Summary	2
Application Check List	2
Minimum Requirements for the Position (see section: Eligibility Criteria).	3
Matchmaking with SciLifeLab Group Leader/ hosting PI	3
Documents Required for Application	3
Application Announcement and Portal	4
Timeline of First Call	4
Eligibility Criteria	5
Selection Process	5
Evaluation Criteria	6
Scoring and Thresholds	6
Funding Decision.....	6
Composition of Selection Panels	6
Redress Process	7
Equal Opportunities	7
Ethical Guidelines/Issues	7
Employment Conditions	7
Training and Career Development	7
PULSE Training Objectives	8
Contact Information	8

<https://www.scilifelab.se/research/pulse/application/>

Choose between PULSE academic and entrepreneurial tracks



Research areas

PULSE postdoc candidates apply with an individually-designed project within molecular life science.

Focus areas for the academic track:

Cell & molecular biology
Precision medicine & diagnostics
Evolution & biodiversity/planetary biology
Epidemiology & infection biology/pandemic laboratory preparedness

Focus areas for the entrepreneurial track:

Technology development to facilitate target-based drug discovery of novel therapeutic agents within

- Machine Learning/AI
- Therapeutic Oligonucleotides
- Display and Selection technologies
- Proximity Inducing Agents

<https://www.scilifelab.se/research/pulse/about/>

Choose PULSE main supervisor



- PULSE main supervisor should be a SciLifeLab Group Leader at one of the 11 Implementing partners
- Matchmaking guide with PIs interested to host a PULSE postdoc, downloadable from SciLifeLab PULSE application page
- Contact PIs of interest with your research idea
- Letter of Commitment (in template) from the main PI host is required with the application

<https://www.scilifelab.se/research/pulse/about/>

Choose PULSE secondment host



- For mandatory secondment, 3-6 months:
 - PULSE secondment/co-supervisor is a PI at a PULSE partner organisation.
 - Secondment should offer cross-sectoral/cross-disciplinary and preferably international exchange
- Matchmaking portfolio with Associated PIs interested to collaborate in a PULSE project downloadable from SciLifeLab PULSE application page
- A secondment should be included in the application, but can be finally decided at the beginning of a PULSE project
- New Associated partners can join PULSE

<https://www.scilifelab.se/research/pulse/about-the-pulse-program/>

Application procedure



1. Select "Register a new user account" in Anubis portal

A screenshot of the SciLifeLab Anubis portal. The header includes the SciLifeLab Anubis logo, navigation links for Calls, Documentation, and About, and a Login button. Below the header, the main content area features a call for new drug discovery projects at SciLifeLab DDD 2024-2, with a 4 days remaining countdown. To the right of the call, there is a list of closed calls, a Login button, and a green button labeled "Register a new user account". This green button is circled with a black line, indicating the next step in the application procedure.

SciLifeLab Anubis Calls Documentation About Login

API

SciLifeLab Anubis

Submit proposals for grants in open calls.

Call for new drug discovery projects at SciLifeLab DDD 2024-2 4 days remaining.

List of closed calls.

Login

Register a new user account

In this call, the Drug Discovery and Development Platform (DDD) at SciLifeLab is looking for new project proposals for drug discovery. DDD supports a project portfolio consisting of about 20 programs and we foresee a need to replenish our portfolio with 3-5 new programs this year. We are interested in programs with defined targets for diseases with medical needs. Therapeutic ideas based on technologies that can be extended to other targets and/or other indications are of special interest, i.e. therapeutic platform technologies, as are projects to develop therapeutic molecules with innovative mode-of-actions (e.g., targeted delivery or new modes-of-action for antisense oligonucleotides, small molecules, antibodies and/or proximity-inducers).

Application procedure



2. Register your account

The screenshot shows a web browser window with the URL `anubis.scilifelab.se`. The page title is "Register a user account". The navigation bar includes "SciLifeLab Anubis", "Calls", "Documentation", "About", and a "Login" button. The main content area is titled "Register a user account" and contains the following fields and instructions:

- User name**: A text input field with a dropdown arrow. Below it, a required field note states: "Required! May be visible to others in some cases. The identifier for the user account." It lists rules: must start with a letter, can contain underscores but not dashes, case is significant, and must be unique. Examples provided are "PerKraulis", "per59", and "nobelprize2040". To the right are links for "Instructions for users" and "Instructions for reviewers".
- Email**: A text input field. Below it, a required field note states: "Required! A valid email address for the user. It must be unique within the database of this site. When your account has been enabled, an email with instructions on how to set your password will be sent to this email address. Some email addresses allow your account to be immediately enabled, depending on the configuration of this particular site. Other email addresses require an administrator of the site to enable your account after inspection."
- ORCID**: A text input field. Below it, a note states: "The ORCID of the user; see [the ORCID website](#)."
- Given name**: A text input field. Below it, a note states: "The user's given name, including middle-name initials."
- Family name**: A text input field. Below it, a note states: "The user's family name."
- Gender**: Radio buttons for "Male", "Female", and "Other".

Fill in your information and remember to include **ORCID** and **"PULSE2026"** in Affiliation field (requirement for approval of account)

Application procedure



3. Follow link in confirmation email to log into Anubis, select "PULSE call 2 (2026)" from menu

SciLifeLab Anubis Calls Documentation About

SciLifeLab Anubis
Submit proposals for grants in open calls.

RED Postdoctoral Fellowships – SciLifeLab Campus Solna, Stockholm, Sweden – 2025 Call 4 days remaining.

Three Research Environment and Development (RED) Postdoctoral Fellowship grants are open for applications in 2025. RED Postdoc Fellows will receive a 2-year contract (1 MSEK/yr) to work on self-designed research projects. Successful candidates will be matched to an existing research group and embedded in the unique interdisciplinary and collaborative research environment at SciLifeLab Campus Solna.

Call for new drug discovery projects at SciLifeLab DDD 2025-2 32 days remaining.

The Drug Discovery and Development (DDD) Platform at SciLifeLab supports academic drug discovery project with expertise and technical capabilities. We have, for example, platforms to develop small molecule drugs, therapeutic antibodies, oligonucleotide therapeutics, proximity-inducing agents such as bispecific antibodies and PROTACs. The DDD offer includes full infrastructure support, a competitive/generous cost model, and full retention of ownership for the project proposer (the academic PI).

In this call, the DDD Platform is looking for new project proposals for drug discovery. **All therapeutic modalities** outlined above are of interest but we especially encourage proposals based on **small molecules** to apply in the present call. DDD supports a project portfolio consisting of about 20 programs and we foresee a need to replenish our portfolio with 3-5 new programs this year. We are interested in programs with defined targets for diseases with medical needs. Therapeutic ideas based on technologies that can be extended to other targets and/or other indications are of special interest, i.e. therapeutic platform technologies, as are projects to develop therapeutic molecules with innovative mode-of-actions (e.g., targeted delivery or new modes-of-action for antisense oligonucleotides, small molecules, antibodies and/or proximity-inducers).

Note that limited projects for selections in phage display libraries for antibodies, selections in DNA encoded chemical libraries for small molecules or limited screening for antisense or siRNA molecules can be considered.

A description of new modalities in drug discovery research can be found here: <https://pubs.acs.org/doi/10.1021/acsmchemlett.9b00582>

If you have questions about the call please contact DDD by email (dddprojectproposal@scilifelab.se). For information about the Drug Discovery and Development platform please visit our website <https://www.scilifelab.se/units/ddd-platform/>. This call is open for scientists with a doctoral degree at a Swedish university or higher institution. English should be used when filling out this application. You are responsible for ensuring that the application is complete. Incomplete applications will not be processed.

PULSE call 2 (2026) 94 days remaining.

The SciLifeLab PULSE (Programme for Future Leaders in Life Science) is a 60-month program funded by the EU Marie Skłodowska-Curie (MSCA) COFUND scheme. The program is coordinated by SciLifeLab. PULSE will train 48 future leaders in Life Sciences through a 3-year postdoctoral fellowship. The program offers two tracks: Academic and Entrepreneurial. All positions are open to candidates of all nationalities according to the Marie Skłodowska-Curie Actions (MSCA) eligibility criteria.

SciLifeLab PULSE has 11 Implementing partners: KTH Royal Institute of Technology, Karolinska Institutet, Linköping University, Lund University, Örebro University, Stockholm University, Umeå University, University of Gothenburg, Uppsala University, Chalmers University of Technology and Swedish University of Agricultural Sciences. Each of the PULSE postdocs will be employed by one of these organisations. In the call, the candidate applies with support from a SciLifeLab Group Leader/main PI affiliated to one of these universities. In addition, 29 associated partners representing research infrastructures, research institutes and companies in life sciences, will contribute to postdoc training and host secondments.

The PULSE projects will be pursued in one of the following research areas:

- Academic track o Cell & molecular biology o Precision medicine & diagnostics o Evolution & biodiversity/planetary biology o Epidemiology & infection biology/pandemic laboratory preparedness
- Entrepreneurial track with focus on Drug discovery and Development: o Machine learning o Therapeutic oligonucleotides o Display and selection technologies o Proximity inducing agents

The PULSE program provides postdocs with access to state-of-the-art research infrastructure platforms, and a community of world-class researchers. The program emphasizes interdisciplinary and intersectoral exchange through secondments at other institutions, providing opportunities to collaborate with researchers from diverse backgrounds. The program will equip postdocs with transferable skills like science communication, sustainable leadership, and intellectual property rights, preparing them for successful careers in various sectors.

INFORMATION TO APPLICANTS: All information about the program, call and application process can be found at <https://www.scilifelab.se/research/pulse/>.



4. Select "Create proposal"

SciLifeLab Anubis Calls Documentation About Search pro

Call for proposals PULSE call 2 (2026)

Identifier	PULSE_call_2_2026		
Opens	2025-12-12 11:44 Europe/Stockholm	Open.	
Closes	2026-03-16 16:00 Europe/Stockholm	94 days remaining.	

My proposal **Create proposal**

Description

The SciLifeLab PULSE (Programme for Future Leaders in Life Science) is a 60-month program funded by the EU Marie Skłodowska-Curie (MSCA) COFUND scheme. The program is coordinated by SciLifeLab. PULSE will train 48 future leaders in Life Sciences through a 3-year postdoctoral fellowship. • The program offers two tracks: Academic and Entrepreneurial. • All positions are open to candidates of all nationalities according to the Marie Skłodowska-Curie Actions (MSCA) eligibility criteria.

5. Fill in requested information in online form and upload requested documents.
Templates downloadable from Anubis PULSE call 2 (2026) page

List of Application elements to upload



- **Research proposal** (in template, directed for either the academic or the entrepreneurial track)
 - Cover letter with motivation for application and expected benefit from PULSE and the chosen track, and describing why the proposed hosting and secondment institutions represent a good fit
 - Abstract
 - Project proposal (Project plan, Suggestion and motivation for secondment, Description of interdisciplinary, intersectoral and international exchange, Project risks and plan for how they will be addressed, Impact and future potential of project). *References do not count toward the page limit.*
 - Plans for how gender and diversity dimensions will be considered and integrated
 - Considerations for incorporating open science principles, such as data sharing and open access publishing
 - Communication, Outreach, and Initial Dissemination Strategy
 - Description of how the project aligns with the MSCA Green charter

List of Application elements to upload



- **Ethics self-assessment** in template (if ethical approval needed, this should be stated in application)
- **2 reference letters** (1 page each)
- **Curriculum vitae** in the Europass format, including list of publications (max. 5 pages)
- **Letter of Commitment from PULSE PI** who has approved to act as main host, in template

*Please take note of and carefully follow instructions for content, extent and formatting of proposal sections and documents before submission. Proposal can be "un-submitted" and edited prior to the deadline but **MUST** then again be submitted.*

What happens after the call deadline?



1. Applications checked for completeness & eligibility
 2. Evaluation of written applications
 3. 2-step online interviews
- **Evaluation will be based on** fixed questions with weighted scores (0-5 scale, insufficient to excellent).
 - **Evaluation panels will be composed to** tailored project specifics (academic/entrepreneurial track, research field)
 - An average score of 4 is required to be shortlisted to the next step

More information about the evaluation process here:
<https://www.scilifelab.se/research/pulse/pulse-guidelines-support/#h-for-evaluators>



Final comments

- All information about PULSE can be found at <https://www.scilifelab.se/research/pulse/>
- We welcome any questions to pulse@scilifelab.se
- Welcome to join candidate Q&A webinar for *general* application and submission enquiries February 26, 2026 (registration to open shortly)
- Time for questions from the chat



Q&A

Evaluation criteria for written proposal



Evaluation panel with three external international evaluators.

	Excellence 50%	Impact 30%	Implementation 20%
Researcher	Quality of the candidate's research outputs/merits: publications, IP, data sets/tools etc. Research output to match time in science, e.g. related to if the candidate has just finished their PhD or if they have a few years of experience as a postdoc. Research experience and technical skills.	Postdoc will benefit from the PULSE training programme and gain new scientific, entrepreneurial and transferable skills. Research project and programme training will increase researcher's future career opportunities on international and across disciplines and sectors. Motivation for the chosen track (academic or entrepreneurial).	Concrete and ambitious career goals.
Project	Quality of the project in terms of research and innovation – state of the art (quality/credibility). Timely for the field of research (original and innovative). The methodology is complete and appropriate. Suggested Project partners/secondment will strengthen the project. Gender and diversity dimension. Open Science.	Clear output and added value through interdisciplinary, intersectoral and international exchange. Proposal contains initial plan for dissemination of results. The project will have an impact on the scientific field with novelty and originality. The project will benefit the involved labs/institutes/infrastructure/organisations (exchange and outputs). Future potential (innovation and translational output). Communication and outreach. Motivation for the chosen track (academic or entrepreneurial).	Project plan is feasible. The expertise and technology needed for the project are available. The work plan is realistic (coherent/effective). The roles of the involved groups are clearly defined. Project has access to the competence needed. Project risks.

Evaluation criteria for 2-step interview



Step 1: Evaluation panel with 2 external international experts, 1 SciLifeLab expert, 1 HR expert and 1 independent observer

Project and career (60%, duration 30 minutes)	Transferable skills (40%, duration 15 minutes)
Presentation of past research. Presentation of proposed project. Discussion. Academic track candidates: preparedness for research questions proposed. Entrepreneurial track candidates: innovation potential of proposed project.	Motivation. Leadership and problem-solving capacity. Oral English proficiency (<i>excellent candidates lacking sufficient oral English skills will be offered additional English training at their host institution</i>).

Step 2: Evaluation panel with PULSE postdoc PI, 1 representative from the host department, 1 SciLifeLab research area expert and 1 independent observer

Project and career (66%, duration 20 minutes)	Transferable skills (33%, duration 10 minutes)
Match between candidate's career goals, and suggested project with host group. Justification to take part in the programme at the host institution. Understanding of proposed infrastructure. Motivation for secondments and AssocPrtns.	Motivation. Leadership and problem-solving capacity.



MSCA COFUND

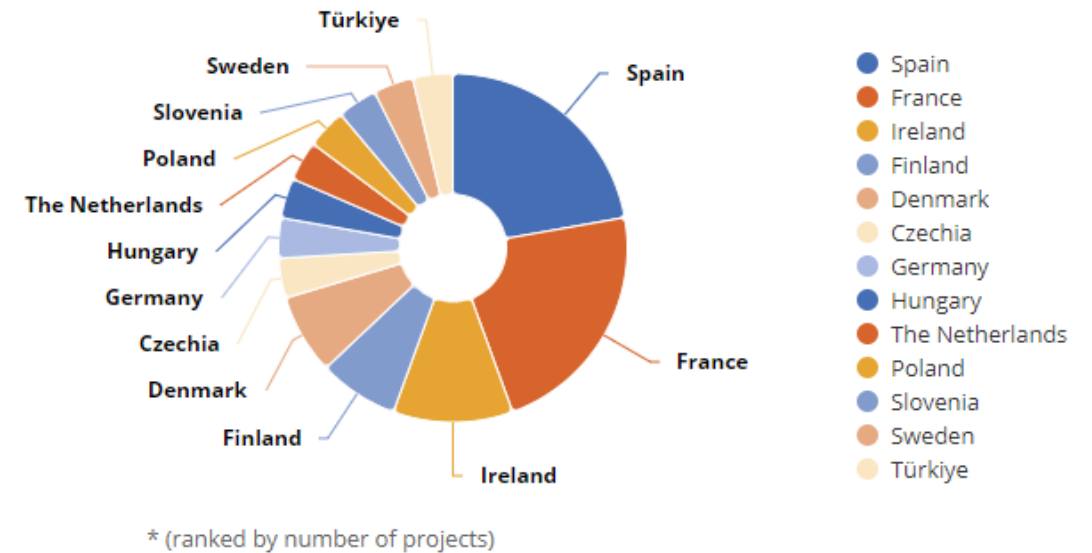
MSCA-COFUND 2023 in numbers



- European Research Executive Agency (REA) received 106 applications
- 27 selected projects coordinated by organizations in 13 countries:
 - Spain and France: 6 projects each
 - Ireland: 3 projects
 - Finland and Denmark: 2 projects each
 - Czechia, Germany, Hungary, the Netherlands, Poland, Slovenia, **Sweden (SciLifeLab PULSE)**, Türkiye: 1 each

Country of coordinating organisations*

COFUND 2023 call results





MSCA-COFUND

All participants must be aware of principles set out in [the Commission Recommendation on the European Charter for Researchers and the Code of Conduct for the Recruitment of Researchers](#).

Guidelines for Supervision

The MSCA are the European Union's flagship program for the mobility and training of researchers. One of the essential elements of successful research is supervision.

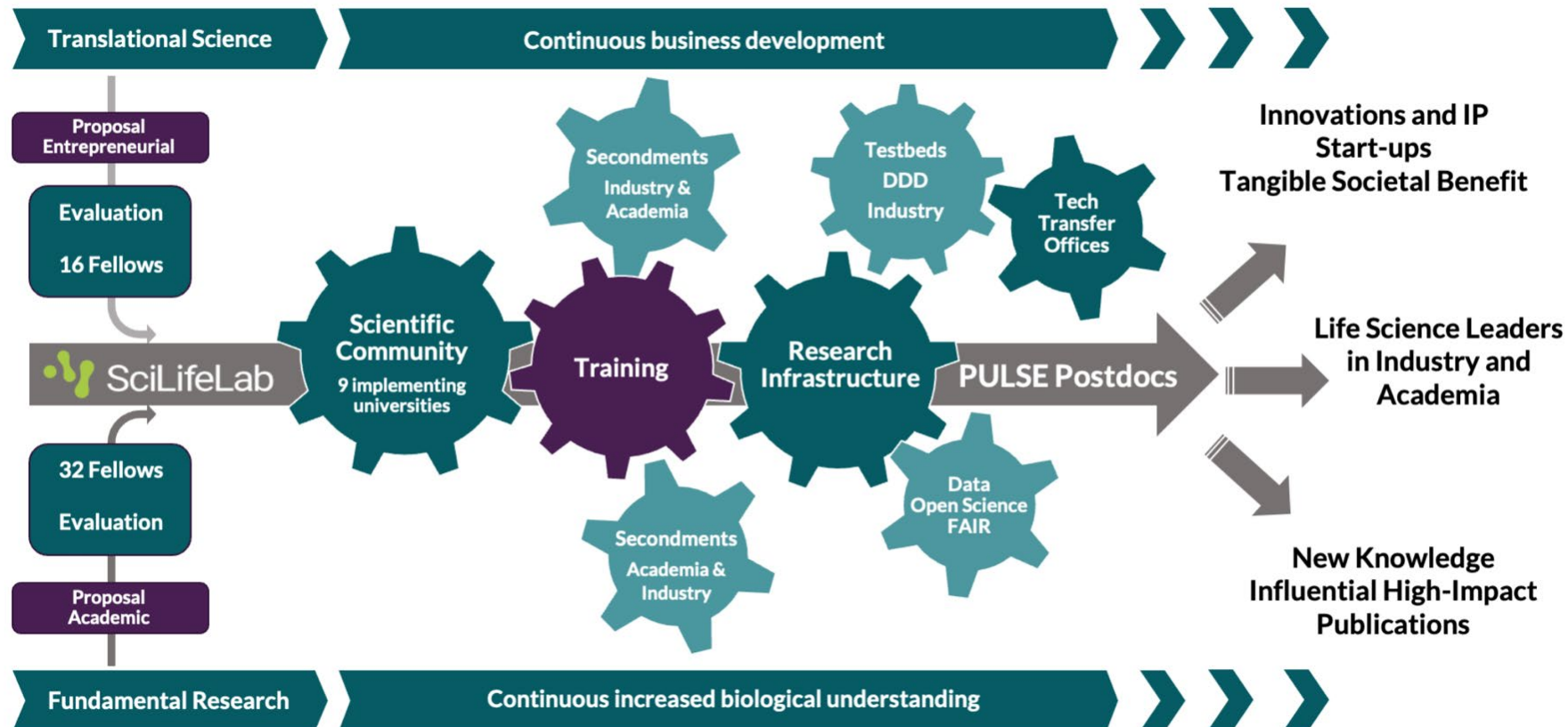
→ [Publications Office of the European Union: MSCA guidelines of supervision](#)

→ [About MSCA: MSCA guidelines on supervision](#)

General principles of the Green Charter

- The goal of the [MSCA Green Charter](#) is to encourage sustainable thinking in research management.

PULSE Training & career support



*"Training is at the core of the SciLifeLab PULSE program, that till provide postdocs with the tools needed to succeed as future research leaders, all within a **supportive** and **diverse** environment."*